

AVA Series

Rectangular Voice Coil Motors

Direct drive, zero cogging,

zero backlash voice coil motors

Low coil mass with very fast response and bandwidth

No contact between coil and core movement

(no wear and tear)

Smooth motion even at low speeds with limitless resolution

(depends on feedback device)

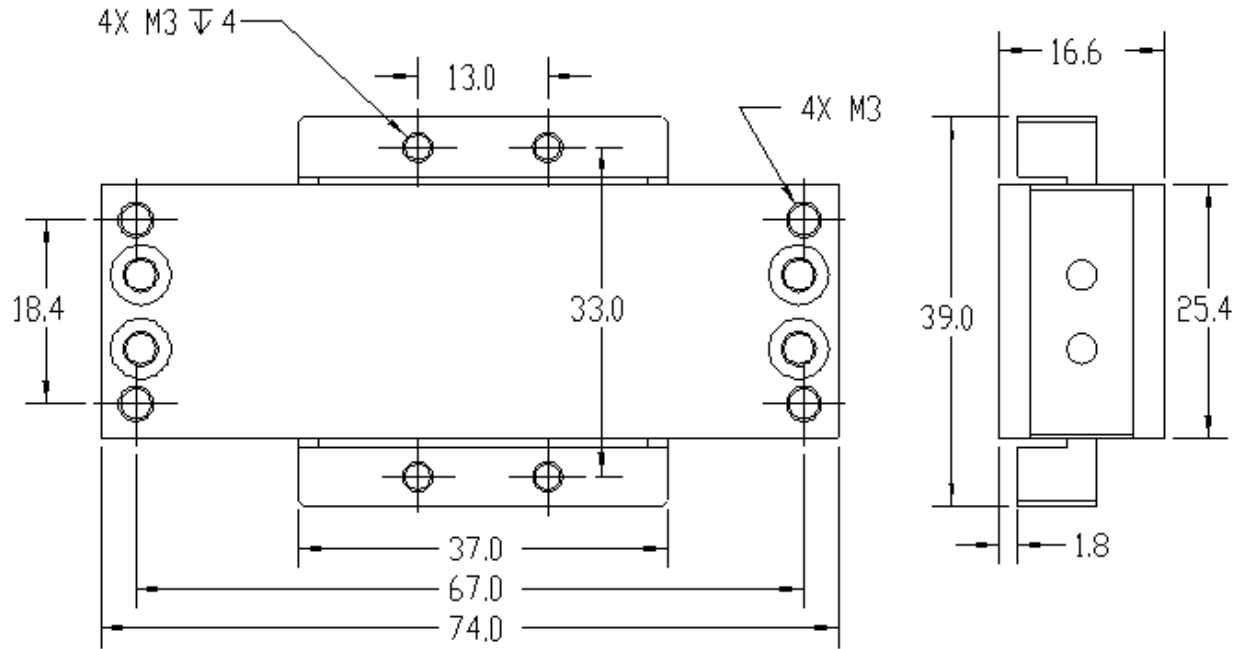


Where Precision Matters

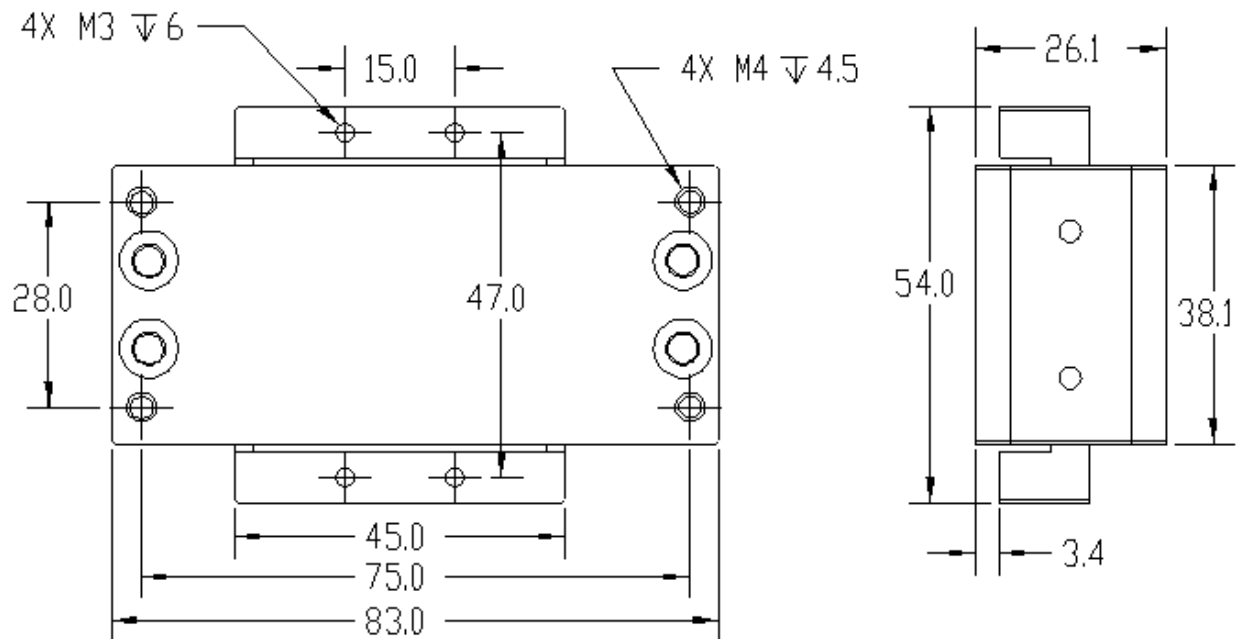
AVA Specifications

Model	Units	AVA 1-20	AVA 2-20	AVA 3-20
Stroke	mm	20	20	20
Force sensivity (at mid stroke)	N/A	1.37	7.20	6.40
Back EMF constant	V/m/s	1.37	7.20	6.40
Continuous force (at 100 °C)*	N	2.74	10.08	17.92
Peak force	N	8.2	30.2	53.8
Resistance	ohms	1.4	3.4	1.5
Inductance	mH	0.26	1.60	0.68
Voltage at peak force	V	24.0	24.0	24.0
Continuous current (coil at 100 °C)*	A	2.00	1.40	2.80
Peak current	A	6.0	4.2	8.4
Actuator constant	N/SqRt(W)	1.16	3.90	5.23
Continuous power (at 100 °C)*	W	5.60	6.66	11.76
Electrical time constant	ms	0.2	0.5	0.5
Mechanical time constant	ms	12.7	3.0	2.6
Clearance of coil	mm	0.60	0.60	0.60
Power at peak force	W	50.4	60.0	105.8
Thermal dissipation constant	W/ °C	0.075	0.089	0.157
Max coil temperature	W/ °C	155.0	155.0	155.0
Coil assembly mass	g	17.0	45.0	72.0
Total assembly mass	g	186.0	496.0	930.0

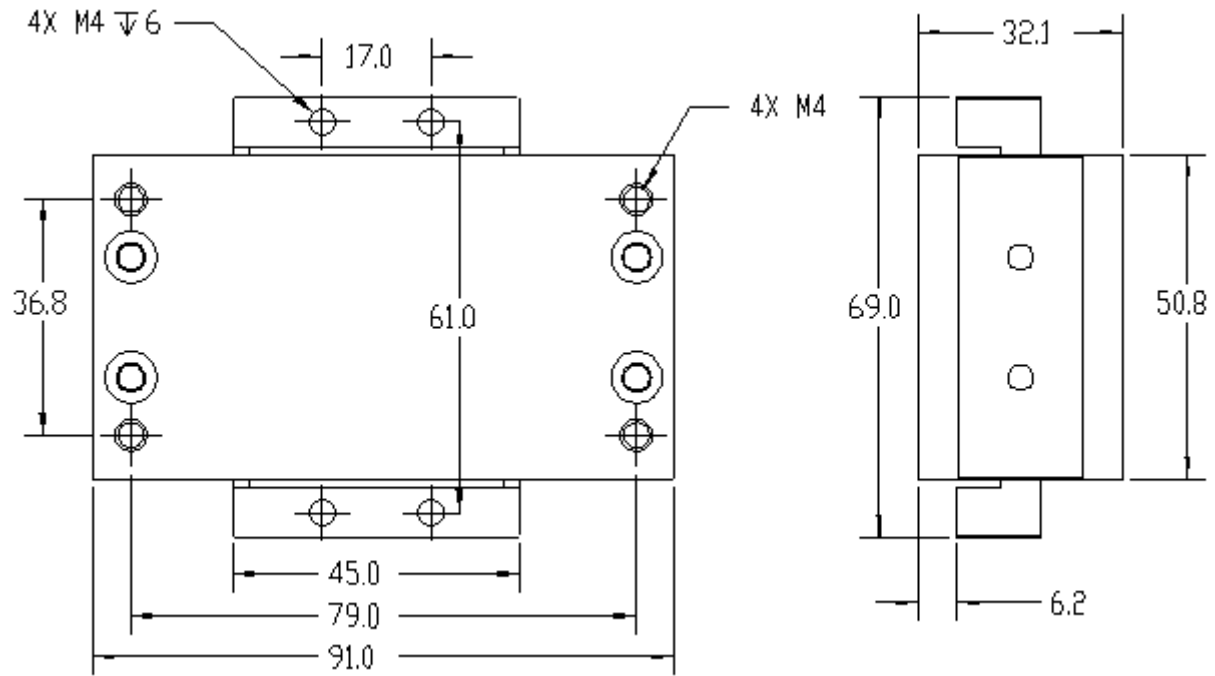
AVA 1



AVA 2



AVA 3



Part Numbering

Example: AVA2-20-0.5

Standard models

Model and stroke	Cable length (m)
AVA 1-20	0.5
AVA 2-20	
AVA 3-20	