

4

3

2

1

MOTOR SPECIFICATIONS:

FRAME SIZE:	NEMA 11	ROTOR INERTIA (g-cm <sup>2</sup> /oz-in <sup>2</sup> ):	8.97/4.9E-02 NOM
STEP ACCURACY (°):	±0.09	INSULATION CLASS:	B (130°C)
STEP ANGLE (°):	1.8	BEARINGS:	ABEC 3, DOUBLE SHIELDED
INPUT VOLTAGE (VDC):	15 - 30	APPROVALS:	CE, RoHS

GEARMOTOR SPECIFICATIONS:

TEMP. RISE (°C):	80 MAX	TOTAL WEIGHT (±10g/±0.35oz):	169/5.96
OPERATING AMB. TEMP. RANGE (°C):	0 to +85	RELATIVE HUMIDITY RANGE (%):	90 NON-CONDENSING
STORAGE TEMP. RANGE (°C):	0 to +40		

GEARHEAD SPECIFICATIONS:

RATIO:	4:1	EFFICIENCY (%):	90
MAX TORQUE CONTINUOUS (Nm/oz-in):	0.5/70.8	BACKLASH (°):	≤1.2
MAX TORQUE (Nm/oz-in):	0.8/113.3	MAX RADIAL LOAD (N/lbf):	≤20/4.49
MAX INPUT SPEED (RPM):	6000	MAX AXIAL LOAD (N/lbf):	≤20/4.49

REVISIONS

ECO #	REV.	DESCRIPTION	DATE	APPROVED
7935	A	INITIAL RELEASE	7/2/18	J. KORDIK
8161	B	REVISE FROM L1 TO L2	3/8/19	J. KORDIK
8758	C	REDRAWN IN SOLIDWORKS	4/18/22	L. LIU

NOTES, UNLESS OTHER WISE SPECIFIED:

1.
- THIS ASSEMBLY IS MANUFACTURED IN COMPLIANCE WITH THE CURRENT EU RoHS DIRECTIVE.
2.
- ALL SPECIFICATIONS AND OPERATING INSTRUCTIONS CAN BE FOUND AT APPLIED-MOTION.COM.
- 3
- CONNECTOR FOR POWER, I/O AND COMMUNICATION. USE INCLUDED CABLE 3004-319.

Sold & Serviced By:




Canadian and International Sales  
**ELECTROMATE**  
877-737-8698  
sales@electromate.com  
www.electromate.com

U.S. Sales



877-378-0240  
sales@servo2go.com  
www.servo2go.com

 <div>PROPRIETARY AND CONFIDENTIAL</div> <div>THE INFORMATION CONTAINED IN THIS DRAWING IS THE SOLE PROPERTY OF APPLIED MOTION PRODUCTS. ANY REPRODUCTION IN PART OR AS A WHOLE WITHOUT THE WRITTEN PERMISSION OF APPLIED MOTION PRODUCTS IS PROHIBITED.</div>	THIRD ANGLE PROJECTION		NAME	DATE	TITLE: INTEGRATED STEP-SERVO MOTOR W/ GEARHEAD		
	UNLESS OTHERWISE SPECIFIED: DIMENSIONS ARE IN MILLIMETERS	DRAWN	Y. LAPNET	4/18/22			
	TOLERANCES: - ANGULAR: ± 0.5 - ONE DECIMAL PLACE: ± 0.25 - TWO DECIMAL PLACES: ± 0.13	PRE.CHECK					
		PRE.APPROVAL					
	MATERIAL	FIN.CHECK	C. BREUNINGER	4/18/22	SIZE	DWG. NO.	REV
	FINISH	SAP: 4696351005842			<b>B</b>	TSM11Q-1RM-G004	<b>C</b>
	DO NOT SCALE DRAWING	ALT DWG. NO.:					
		ALT SAP:			SCALE: 2:1		SHEET 1 OF 2

4

3

2

1

4

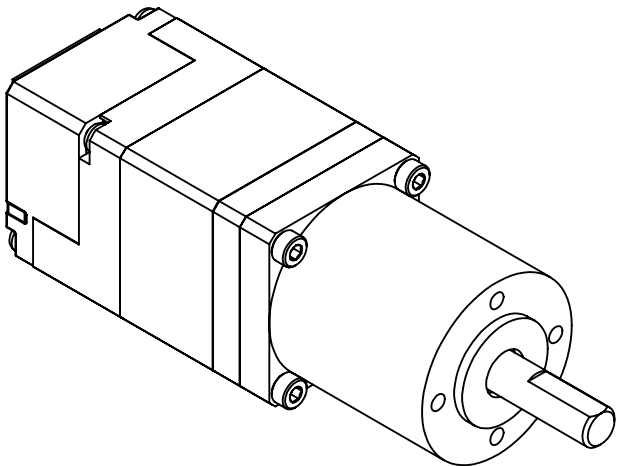
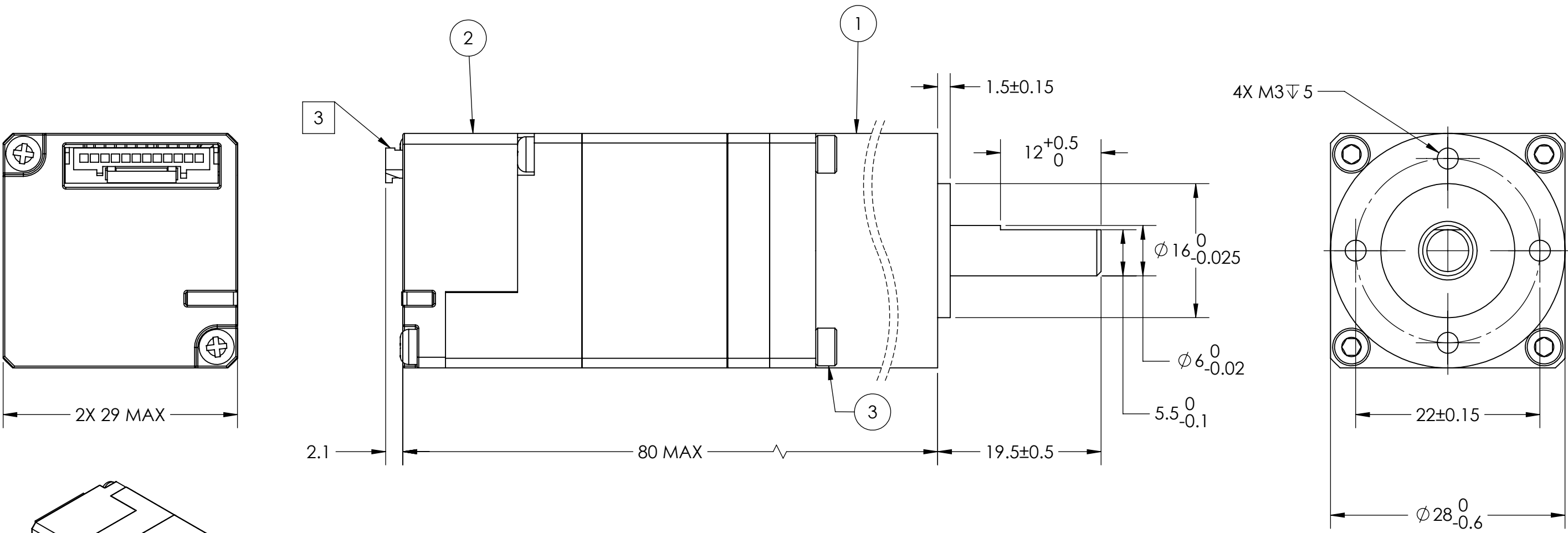
3

2

1

B

B



A

A

ITEM NO.	SAP PART NUMBER	PART NUMBER	DESCRIPTION	QTY.
1	4332401001498	28PH004.00-L2	PH GEARHEAD	1
2	4696351002073	TSM11Q-1RM	STEP-SERVO MOTOR	1
3	4294404001453	91292A012 OR EQUIVALENT	M2.5X8MM STAINLESS STEEL SOCKET HEAD SCREW	4

GEARHEAD MATERIALS:	
GEARTRAIN:	Y100 (1144) STEEL
HOUSING:	304 STAINLESS STEEL
INPUT/OUTPUT FLANGE:	LY12 ALUMINUM
OUTPUT SHAFT:	40Cr STEEL
PINION:	Y100 (1144) STEEL



PROPRIETARY AND CONFIDENTIAL  
THE INFORMATION CONTAINED IN THIS DRAWING IS THE SOLE PROPERTY OF APPLIED MOTION PRODUCTS. ANY REPRODUCTION IN PART OR AS A WHOLE WITHOUT THE WRITTEN PERMISSION OF APPLIED MOTION PRODUCTS IS PROHIBITED.

THIRD ANGLE PROJECTION

UNLESS OTHERWISE SPECIFIED:  
DIMENSIONS ARE IN MILLIMETERS  
TOLERANCES:  
- ANGULAR: ± 0.5  
- ONE DECIMAL PLACE: ± 0.25  
- TWO DECIMAL PLACES: ± 0.13

MATERIAL

FINISH

DO NOT SCALE DRAWING

NAME	DATE
DRAWN	Y. LAPNET
PRE.CHECK	
PRE.APPROVAL	
FIN.CHECK	C. BREUNINGER
SAP: 4696351005842	4/18/22
ALT DWG. NO.:	
ALT SAP:	

TITLE: INTEGRATED STEP-SERVO MOTOR W/ GEARHEAD		
SIZE	DWG. NO.	REV
B	TSM11Q-1RM-G004	C
SCALE: 2:1		SHEET 2 OF 2

4

3

2

1