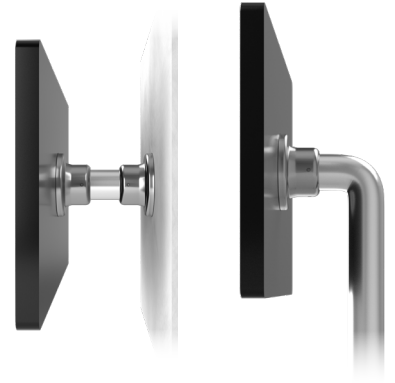


# JSmart715M Tech-Note

## 15" TFT, PCAP Touch, PoE Ethernet, Wi-Fi, NFC, JMobile runtime

- 15 inch PCAP display, Resolution 1366x768 pixel
- PCAP Touchscreen Multitouch
- 10/100 Ethernet port PoE
- Wi-Fi Connection and NFC Device
- 64 bit quad core CPU
- Full IP protection; ideal for mounting-arm installation
- Operating temperature -20°C to +55°C
- UL 61010-1 approval
- Dedicated HMI support arm system
- Includes environment and motion sensors



## Highlights

JSmart700M feature a powerful 64 bit quad core CPU that ensures JMobile applications are running in their optimal environment for the highest performance.

The special features of JSmart715M are the sleek and elegant design, the 15 inch multi-touch capacitive touchscreen display with robust glass front, and the ability to connect the device via a single Power-over-Ethernet (PoE) cable. This technology allows maximum flexibility and efficiency in installation as well as full IP67 protection with the use of appropriate accessories and connectors.

The Wi-Fi interface improves the integration capability of the device while NFC expands the possible applications.

JSmart700M is the ideal choice for the most demanding IIoT edge applications in factory, marine and building automation where powerful and performing HMI is needed for installation as close as possible to human operators.

**Sold & Serviced By:**



Canadian and International Sales

**ELECTROMATE**

877-737-8698

[sales@electromate.com](mailto:sales@electromate.com)

[www.electromate.com](http://www.electromate.com)

U.S. Sales

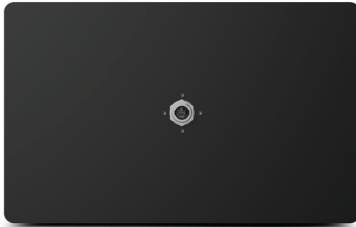
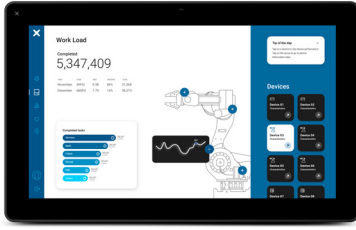
**SERVO2GO.com**

877-378-0240

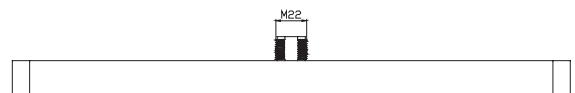
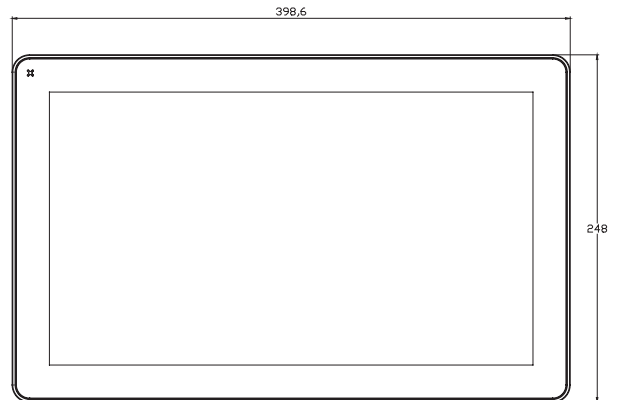
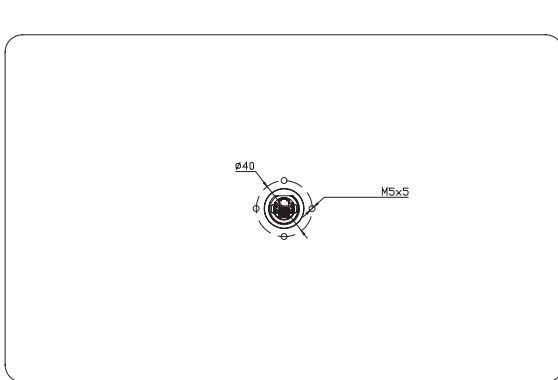
[sales@servo2go.com](mailto:sales@servo2go.com)

[www.servo2go.com](http://www.servo2go.com)

# JSmart715M - Technical Data



System Resources	
Display - Colors	15.6" TFT - 16M
Resolution	1366x768
Brightness	400 cd/m <sup>2</sup>
Dimming	Yes
Touchscreen	Projected Capacitive, Multitouch
CPU	64-bit RISC Quad core - 1.6 GHz
Operating System	Linux
Flash	8 GB
RAM	2 GB
FRAM	64 KB
Real Time Clock, RTC Back-up	Yes
Interface	
Ethernet port	10/100 PoE
USB port	1 (Host V2.0, max. 500 mA, available with special cable)
LED	1 RGB
Sensors	Temperature, 3-Axis Accelerometer
Buzzer	Yes
NFC	ISO/IEC 14443A
Wi-Fi	IEEE 802.11a/b/g
Ratings	
Power supply	IEEE 802.3at PoE+
Power Consumption	23W max.
Battery	Rechargeable Lithium battery, not user-replaceable
Environment Conditions	
Operating Temperature	-20° to +55° C (vertical installation)
Storage Temperature	-30°C to +80°C
Operating / Storage Humidity	5-85% RH, non-condensing
Protection Class	IP67 (requires appropriate accessories and cables) - Type: 1, 12, 4x
Dimensions and Weights	
Faceplate LxH	398.6x248 mm (15.69x 9.76")
Depth D	26.5 mm (1.04")
Weight	4.0 Kg
Approvals	
CE	Radio Equipment Directive 2014/53/EU (RED)
UL	cULus: UL61010-1 / UL61010-2-201
UL	cULus: Class 1 Div 2
RCM	Yes



## Ordering Information

Model	Part Number	Description
JSmart715M	+JS715GD2U5P1	HMI 15.6" TFT, 1366x768, PCAP Touch, PoE Ethernet, Wi-Fi, NFC, JMobile runtime