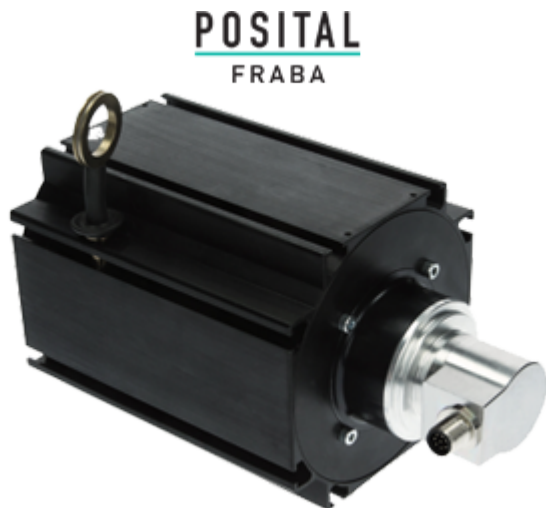



LINARIX Linear Sensor
LU0-C901B-1213-AH00-PRM

General Data
General Data

Supply Voltage	9 - 30 VDC
Power Consumption	≤ 1.2 W
Turn On Time	<500 ms
Operating Temperature	-20 °C (-4 °F) - +80 °C (+176 °F)
Weight	3055 g (6.74 lb)
Protection Class (Encoder)	IP64 / IP65
EMC: Emitted Interference	DIN EN 61000-6-4
EMC: Noise Immunity	DIN EN 61000-6-2

Mechanical Data

Max. Measurement Length	10.00 m (32.81')
Length per Revolution	315 mm
Wire Material	Coated Polyamide Stainless Steel
Wire Diameter	1.00 mm
Encoder Housing Material	Steel
Draw Wire Housing Material	Aluminum
Max. Speed of Wire Displacement	2.0 m / s
Max. Wire Acceleration	6.0 g
Max. Extension Force	21.0 N

Data Sheet

Printed at 4-11-2021 15:11



Min. Retraction Force	8.0 N
Actuation Lifetime	0.5 mio Cycles (Estimated based on ideal conditions)
Wire Mounting	Eyelet
Max. Wire Exit Angle	$\pm 3^\circ$

Sensor Data

Technology	Magnetic ($\leq 0.09^\circ$)
Accuracy	± 0.01 % FSO
Repeatability	± 0.001 % FSO
Resolution [Encoder - Singleturn]	13 bit
Resolution [Encoder - Multiturn]	12 bit
Approx. Linear Resolution	38.5 μm
Output Code	Binary

Interface

Communication Interface	SAE J1939
Profile	J1939 specific
Programming Functions	Resolution, preset, direction, node ID, baud rate
Manual Functions	Programmable
Transmission Rate	min. 20 kBaud, max. 1 MBaud
Cycle Time Interface	≥ 1 ms

Outputs

Output Driver	Transceiver (ISO 11898), Galvanically Isolated by Opto-Coupl
Current Consumption	≤ 70 mA @ 10 V DC, ≤ 50 mA @ 24 V DC
Reverse Polarity Protection	Yes
Short Circuit Protection	Yes
MTTF	240 years @ 40 °C

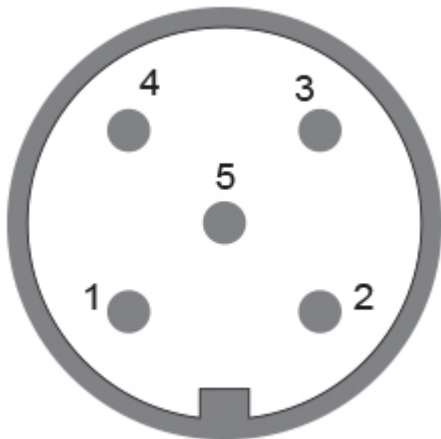
Electrical Connection

Connection Orientation	Radial
Connection Orientation (w.r.t Draw Wire)	Radial 0 / Axial
Connection Type	Cable / Connector
Connector	M12, Male, 5 pin, a coded



Product Life Cycle

Product Life Cycle	New
--------------------	-----



Connection Plan

SIGNAL	PIN NUMBER
Power Supply	2
GND	3
CAN High	4
CAN Low	5
CAN GND	1

Connector-View on Encoder

Dimensional Drawing

[2D Drawing](#)

Accessories

Connectors & Cables

POS M12 5pin-A Female+5m PUR Cable

POS M12 5pin-A Female+2m PUR Cable

POS M12 5pin-A Female+10m PUR Cable

10m PUR Cable, 5pin, A-Coded, f IP69K

M12, 5pin A-Coded, Female

More

Data Sheet

Printed at 4-11-2021 15:11



Got questions? Need an individual solution? We are here to help!

Sold & Serviced By:



Canadian and International Sales

ELECTROMATE

877-737-8698

sales@electromate.com

www.electromate.com

U.S. Sales

SERVO2GO.com

877-378-0240

sales@servo2go.com

www.servo2go.com

Contact Us

All dimension in [inch] mm. Encoder dimensions may vary depending on electrical interface and connector. This drawing and the information contained is for general presentation purposes only. Please refer to the "Download" section for detailed technical drawings. © FRABA B.V., All rights reserved. We do not assume responsibility for technical inaccuracies or omissions. Specifications are subject to change without notice.