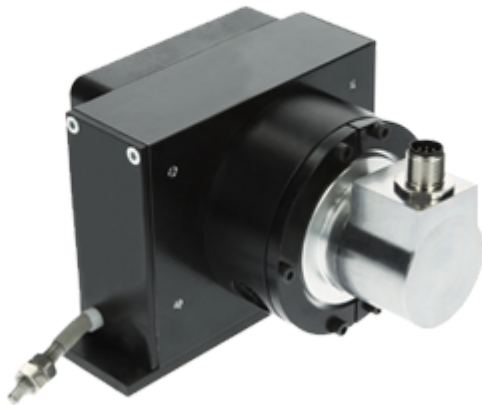



**LINARIX Linear Sensor**
**LU0-S101B-1213-6E00-PRQ**


**General Data**
**General Data**

Supply Voltage	4.5 - 30 VDC
Power Consumption	≤ 1.0 W
Turn On Time	< 1 s
Operating Temperature	-20 °C (-4 °F) - +80 °C (+176 °F)
Weight	915 g (2.02 lb)
Protection Class (Encoder)	IP64 / IP65
EMC: Emitted Interference	DIN EN 61000-6-4
EMC: Noise Immunity	DIN EN 61000-6-2

**Mechanical Data**

Max. Measurement Length	6.00 m (19.69')
Length per Revolution	200 mm
Wire Material	Stainless Steel
Wire Diameter	0.60 mm
Encoder Housing Material	Steel
Draw Wire Housing Material	Aluminum / plastic
Max. Speed of Wire Displacement	3 m/s
Max. Wire Acceleration	2.4 g
Max. Extension Force	8.0 N

Data Sheet

Printed at 4-11-2021 15:11



Min. Retraction Force	3.0 N
Actuation Lifetime	Not Available
Wire Mounting	M6 Thread
Max. Wire Exit Angle	±10°

### Sensor Data

Technology	Magnetic ( $\leq 0.09^\circ$ )
Accuracy	±0.006 % FSO
Repeatability	±0.003 % FSO
Resolution [Encoder - Singleturn]	13 bit
Resolution [Encoder - Multiturn]	12 bit
Approx. Linear Resolution	24.4 $\mu\text{m}$
Output Code	Binary

### Interface

Communication Interface	SSI with Preset
Manual Functions	Preset + complement via cable or connector
Cycle Time Interface	$\geq 25 \mu\text{s}$

### Outputs

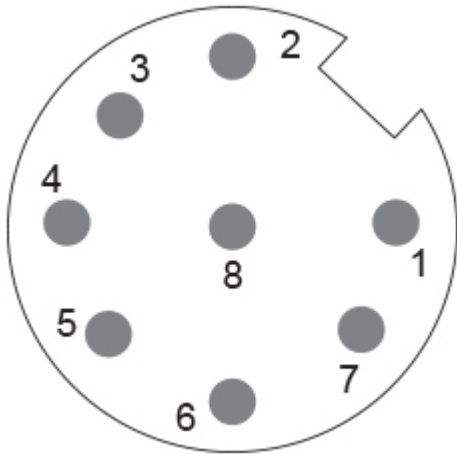
Output Driver	RS422
Current Consumption	Typical 50 mA
Clock Input	RS 422, via Optocoupler
Clock frequency	100 kHz - 2 MHz
Reverse Polarity Protection	Yes
Short Circuit Protection	Yes
MTTF	350 years @ 40 °C

### Electrical Connection

Connection Orientation	Radial
Connection Orientation (w.r.t Draw Wire)	Radial 0 / Axial
Connector	M12, Male, 8 pin, a coded

### Product Life Cycle

Product Life Cycle	Established
--------------------	-------------



### Connection Plan

SIGNAL	PIN NUMBER
Power Supply	2
GND	1
Data+	5
Data-	6
Clock+	3
Clock-	4
Preset	7
DIR	8
Shielding	Connector Housing

Connector-View on Encoder  
Rotation Clockwise (seen on shaft)

### Dimensional Drawing

### [2D Drawing](#)

### Accessories

#### Connectors & Cables

10m PUR Cable, 8pin, A-Coded, f  
 POS M12 8pin-A Female+5m PUR Cable  
 POS M12 8pin-A Female+2m PUR Cable  
 POS M12 8pin-A Female+10m PUR Cable  
 M12, 8pin A-Coded, Female

More

Data Sheet

Printed at 4-11-2021 15:11



Displays  
AP21-00 SSI Display  
AP21-DA SSI Display (4 dig. + analog o/p)  
DiMod-P SSI Display  
Configuration/Programming Tools  
SSI2USB Adapter DB15 (VA01)

**Got questions? Need an individual solution? We are here to help!**

Sold & Serviced By:



*Canadian and International Sales*

**ELECTROMATE**

**877-737-8698**

[sales@electromate.com](mailto:sales@electromate.com)

[www.electromate.com](http://www.electromate.com)

*U.S. Sales*

**SERVO2GO.com**

**877-378-0240**

[sales@servo2go.com](mailto:sales@servo2go.com)

[www.servo2go.com](http://www.servo2go.com)

Contact Us

All dimension in [inch] mm. Encoder dimensions may vary depending on electrical interface and connector. This drawing and the information contained is for general presentation purposes only. Please refer to the "Download" section for detailed technical drawings. © FRABA B.V., All rights reserved. We do not assume responsibility for technical inaccuracies or omissions. Specifications are subject to change without notice.