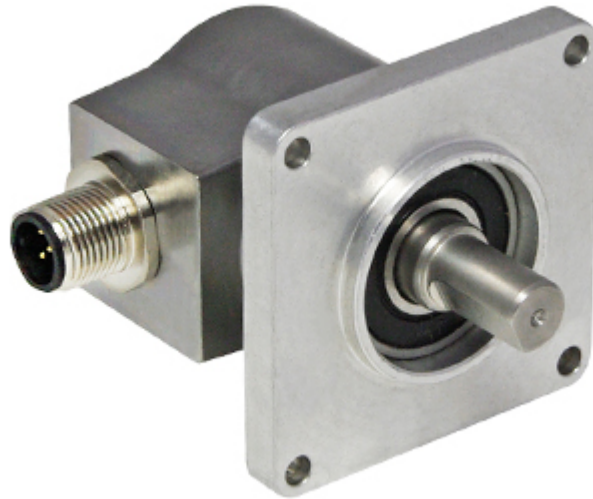


## IXARC Absolute Rotary Encoder

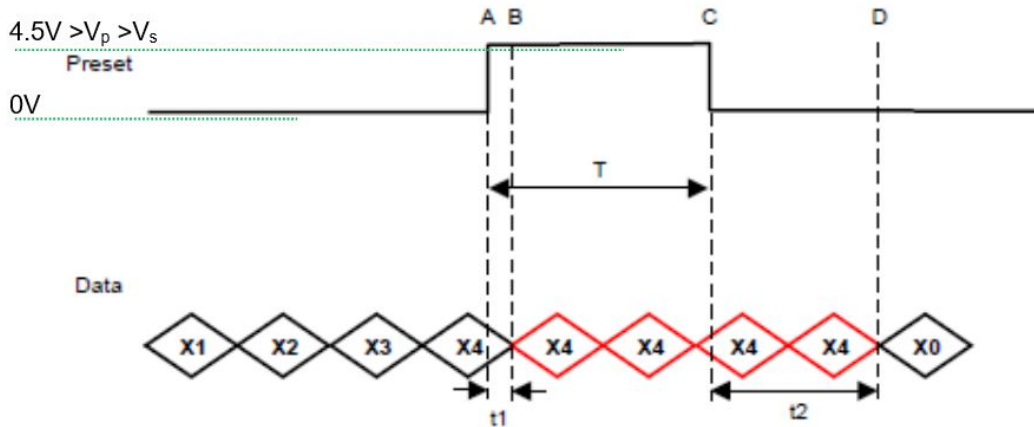
**UCD-S101G-0013-3C40-PRQ**



### Interface

Interface	SSI with Preset
Manual Functions	Preset + complement via cable or connector
Interface Cycle Time	≥ 25 μs
Number of Preset Cycles	5,100,000
SSI Format	SSSSSSSSSSSS0
Video Manual	<a href="#">▶ Watch a simple installation video</a>

The Preset function allows to set the output value to zero at the present mechanical position.  
Input resistance is 110 kΩ



**T = 105 msec (+/- 2msec)**

**t1 = 3.5 msec +/- 2msec**

**T+ t2 = 224 msec (+/- 4msec)**

The DIR-function allows to change the encoder counting direction.

0 (open or GND)	Increasing Values Turning Clockwise (Viewed from Flange Side)
1 (4.5 V to Vs)	Decreasing Values Turning Clockwise (Viewed from Flange Side)
Min Time needed for change	40 msec
Input Resistance	60 kΩ

### Outputs

Output Driver	RS422
---------------	-------

### Electrical Data

Supply Voltage	4.5 - 30 VDC
Current Consumption	Typical 50 mA
Power Consumption	≤ 1.0 W
Start-Up Time	< 1 s
Clock Input	RS 422, via Optocoupler
Clock Frequency	100 kHz - 2 MHz
Reverse Polarity Protection	Yes
Short Circuit Protection	Yes

EMC: Emitted Interference	DIN EN 61000-6-4
EMC: Noise Immunity	DIN EN 61000-6-2
MTTF	500 years @ 40 °C

### Sensor

Technology	Magnetic
Resolution Singleturn	13 bit
Resolution Multiturn	0 bit
Accuracy (INL)	±0.0878° (≤ 12 bit)
Sense Signal (Default)	Clockwise shaft movement (front view on shaft)
Code	Gray

### Environmental Specifications

Protection Class (Shaft)	IP65
Protection Class (Housing)	IP65
Operating Temperature	-40 °C (-40 °F) - +85 °C (+185 °F)
Humidity	98% RH, no condensation

### Mechanical Data

Housing Material	Steel
Housing Coating	Cathodic corrosion protection (>720 hrs salt spray resistance)
Flange Type	Square, □ 2" (3)
Flange Material	Aluminum
Shaft Type	Solid, Single Flat, Length = 16 mm
Shaft Diameter	∅ 6.35 mm (1/4")
Shaft Material	Stainless Steel V2A (1.4305, 303)
Max. Shaft Load	Axial 40 N, Radial 110 N
Minimum Mechanical Lifetime (10 <sup>8</sup> revolutions with Fa/Fr)	430 (20 N / 40 N), 150 (40 N / 60 N), 100 (40 N / 80 N), 55 (40 N / 110 N)
Rotor Inertia	≤ 30 gcm <sup>2</sup> [≤ 0.17 oz-in <sup>2</sup> ]
Friction Torque	≤ 3 Ncm @ 20 °C (4.2 oz-in @ 68 °F)
Max. Permissible Mechanical Speed	≤ 12000 1/min
Shock Resistance	≤ 100 g (half sine 6 ms, EN 60068-2-27)
Permanent Shock Resistance	≤ 10 g (half sine 16 ms, EN 60068-2-29)
Vibration Resistance	≤ 10 g (10 Hz - 1000 Hz, EN 60068-2-6)
Length	92 mm (3.62")

Data Sheet

Printed at 10-11-2021 21:11

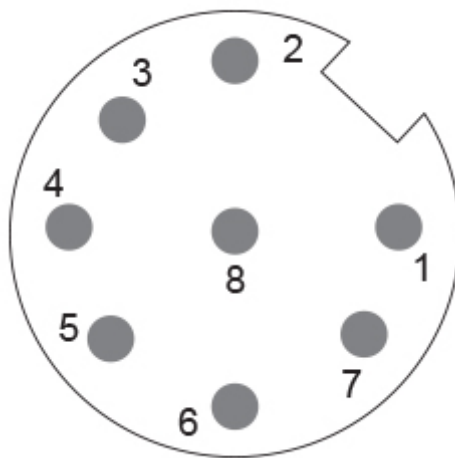
Weight	215 g (0.47 lb)
--------	-----------------

### Electrical Connection

Connection Orientation	Radial
Connector	M12, Male, 8 pin, a coded

### Product Life Cycle

Product Life Cycle	Established
Approval	CE + cULus



### Connection Plan

SIGNAL	PIN NUMBER
Power Supply	2
GND	1
Data+	5
Data-	6
Clock+	3
Clock-	4
Preset	7
DIR	8
Shielding	Connector Housing

Connector-View on Encoder  
 Rotation Clockwise (seen on shaft)

### Dimensional Drawing

## [2D Drawing](#)

### Accessories

#### Connectors & Cables

10m PUR Cable, 8pin, A-Coded, f  
POS M12 8pin-A Female+5m PUR Cable  
POS M12 8pin-A Female+2m PUR Cable  
POS M12 8pin-A Female+10m PUR Cable  
M12, 8pin A-Coded, Female

More

#### Couplings

Coupling Bellow Type-10-(1/4")  
Coupling Bellow Type-06-(1/4")  
Coupling Jaw Type-10-(1/4")  
Coupling Jaw Type-06-(1/4")

More

#### Displays

AP21-00 SSI Display  
AP21-DA SSI Display (4 dig. + analog o/p)  
DiMod-P SSI Display

Configuration/Programming Tools  
SSI2USB Adapter DB15 (VA01)

**Got questions? Need an individual solution? We are here to help!**

## Sold & Serviced By:

  
Canadian and International Sales  
**ELECTROMATE**  
877-737-8698  
[sales@electromate.com](mailto:sales@electromate.com)  
[www.electromate.com](http://www.electromate.com)

U.S. Sales  
  
**SERVO2GO.com**  
877-378-0240  
[sales@servo2go.com](mailto:sales@servo2go.com)  
[www.servo2go.com](http://www.servo2go.com)

The picture and drawing are for general presentation purposes only. Please refer to the "Download" section for detailed technical drawings. All dimension in [inch] mm. © FRABA B.V., All rights reserved. We do not assume responsibility for technical inaccuracies or omissions. Specifications are subject to change without notice.