

IXARC Absolute Rotary Encoder

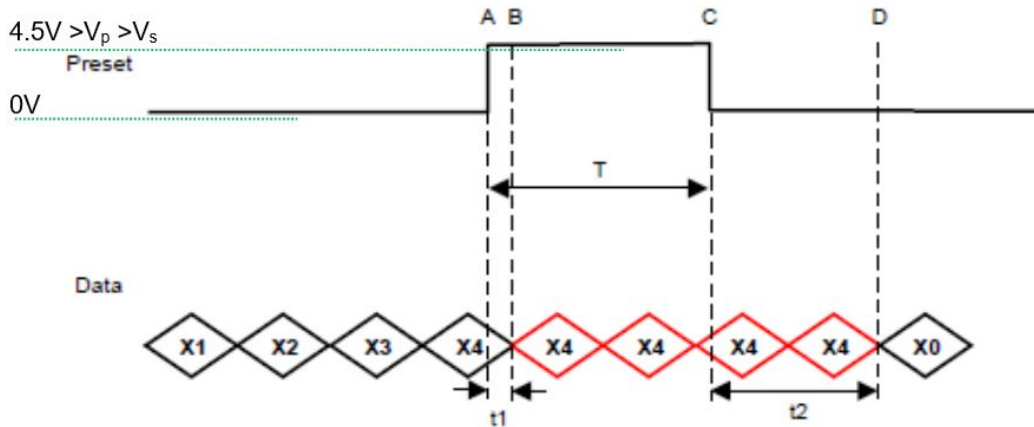
UCD-S101G-1213-HASS-PRL



Interface

| | |
|-------------------------|---|
| Interface | SSI with Preset |
| Manual Functions | Preset + complement via cable or connector |
| Interface Cycle Time | ≥ 25 μs |
| Number of Preset Cycles | 5,100,000 |
| SSI Format | MMMMMMMMMMMMSSSSSSSSSSSS0 |
| Video Manual | ▶ Watch a simple installation video |

The Preset function allows to set the output value to zero at the present mechanical position.
 Input resistance is 110 k Ω



T = 105 msec (+/- 2msec)
t1 = 3.5 msec +/- 2msec
T+ t2 = 224 msec (+/- 4msec)

The DIR-function allows to change the encoder counting direction.

| | |
|----------------------------|---|
| 0 (open or GND) | Increasing Values Turning Clockwise (Viewed from Flange Side) |
| 1 (4.5 V to Vs) | Decreasing Values Turning Clockwise (Viewed from Flange Side) |
| Min Time needed for change | 40 msec |
| Input Resistance | 60 k Ω |

Outputs

| | |
|---------------|-------|
| Output Driver | RS422 |
|---------------|-------|

Electrical Data

| | |
|-----------------------------|-------------------------|
| Supply Voltage | 4.5 - 30 VDC |
| Current Consumption | Typical 50 mA |
| Power Consumption | ≤ 1.0 W |
| Start-Up Time | < 1 s |
| Clock Input | RS 422, via Optocoupler |
| Clock Frequency | 100 kHz - 2 MHz |
| Reverse Polarity Protection | Yes |
| Short Circuit Protection | Yes |

| | |
|---------------------------|-------------------|
| EMC: Emitted Interference | DIN EN 61000-6-4 |
| EMC: Noise Immunity | DIN EN 61000-6-2 |
| MTTF | 350 years @ 40 °C |

Sensor

| | |
|------------------------|---|
| Technology | Magnetic |
| Resolution Singleturn | 13 bit |
| Resolution Multiturn | 12 bit |
| Multiturn Technology | Self powered magnetic pulse counter (no battery, no gear) |
| Accuracy (INL) | $\pm 0.0878^\circ$ (≤ 12 bit) |
| Sense Signal (Default) | Clockwise shaft movement (front view on shaft) |
| Code | Gray |

Environmental Specifications

| | |
|----------------------------|------------------------------------|
| Protection Class (Shaft) | IP66/IP67 |
| Protection Class (Housing) | IP66/IP67 |
| Operating Temperature | -40 °C (-40 °F) - +85 °C (+185 °F) |
| Humidity | 98% RH, no condensation |

Mechanical Data

| | |
|-----------------------------------|---|
| Housing Material | Steel |
| Housing Coating | Wet coating (RAL 9006 White Aluminium) + Cathodic corrosion protection (>720 h salt spray resistance) |
| Flange Type | Blind Hollow, \varnothing 58 mm (H) |
| Flange Material | Aluminum |
| Shaft Type | Blind Hollow, Depth = 28 mm |
| Shaft Diameter | \varnothing 10 mm (0.39") |
| Shaft Material | Stainless Steel V2A (1.4305, 303) |
| Rotor Inertia | ≤ 30 gcm ² [≤ 0.17 oz-in ²] |
| Friction Torque | ≤ 5 Ncm @ 20 °C, (7.1 oz-in @ 68 °F) |
| Max. Permissible Mechanical Speed | ≤ 3000 1/min |
| Shock Resistance | ≤ 100 g (half sine 6 ms, EN 60068-2-27) |
| Permanent Shock Resistance | ≤ 10 g (half sine 16 ms, EN 60068-2-29) |
| Vibration Resistance | ≤ 10 g (10 Hz - 1000 Hz, EN 60068-2-6) |
| Length | 71,2 mm (2.80") |
| Weight | 320 g (0.71 lb) |

Data Sheet

Printed at 10-11-2021 21:11

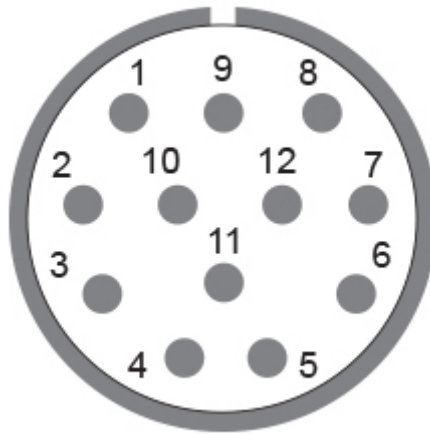
| | |
|-------------------------------------|---|
| Maximum Axial / Radial Misalignment | Static ± 0.3 mm / ± 0.5 mm; Dynamic ± 0.1 mm / ± 0.2 mm |
|-------------------------------------|---|

Electrical Connection

| | |
|------------------------|-------------------------------|
| Connection Orientation | Radial |
| Connector | M23, Male, 12 pin, CCW / left |

Product Life Cycle

| | |
|--------------------|-------------|
| Product Life Cycle | Established |
| Approval | CE + cULus |



Connection Plan

| SIGNAL | PIN NUMBER |
|---------------|------------|
| Power Supply | 11 |
| GND | 12 |
| Data+ | 3 |
| Data- | 4 |
| Clock+ | 2 |
| Clock- | 1 |
| Preset | 9 |
| DIR | 8 |
| Not Connected | 5 |
| Not Connected | 6 |
| Not Connected | 7 |
| Not Connected | 10 |



Connector-View on Encoder **Dimensional Drawing**

[2D Drawing](#)

Accessories

Connectors & Cables

10m PVC Cable, 12pin, Clockwise, f

15m PVC Cable, 12pin, Clockwise, f

1m PVC Cable, 12pin, Clockwise, f

20m PVC Cable, 12pin, Clockwise, f

5m PVC Cable, 12pin, Clockwise, f

30m PVC Cable, 12pin, Clockwise, f

2m PVC Cable, 12pin, Clockwise, f

M23, 12pin Clockwise, Female

More

Clamping Rings

Clamping Ring Hollow Shaft T120

Displays

AP21-00 SSI Display

AP21-DA SSI Display (4 dig. + analog o/p)

DiMod-P SSI Display

Configuration/Programming Tools

SSI2USB Adapter DB15 (VA01)

Got questions? Need an individual solution? We are here to help!

Sold & Serviced By:



Canadian and International Sales

ELECTROMATE

877-737-8698

sales@electromate.com

www.electromate.com

U.S. Sales

SERVO2GO.com

877-378-0240

sales@servo2go.com

www.servo2go.com

The picture and drawing are for general presentation purposes only. Please refer to the "Download" section for detailed technical drawings. All dimension in [inch] mm. © FRABA B.V., All rights reserved. We do not assume responsibility for technical inaccuracies or omissions. Specifications are subject to change without notice.

Data Sheet

Printed at 10-11-2021 21:11