

Sold & Serviced By:



Toll Free Phone (877) SERV098

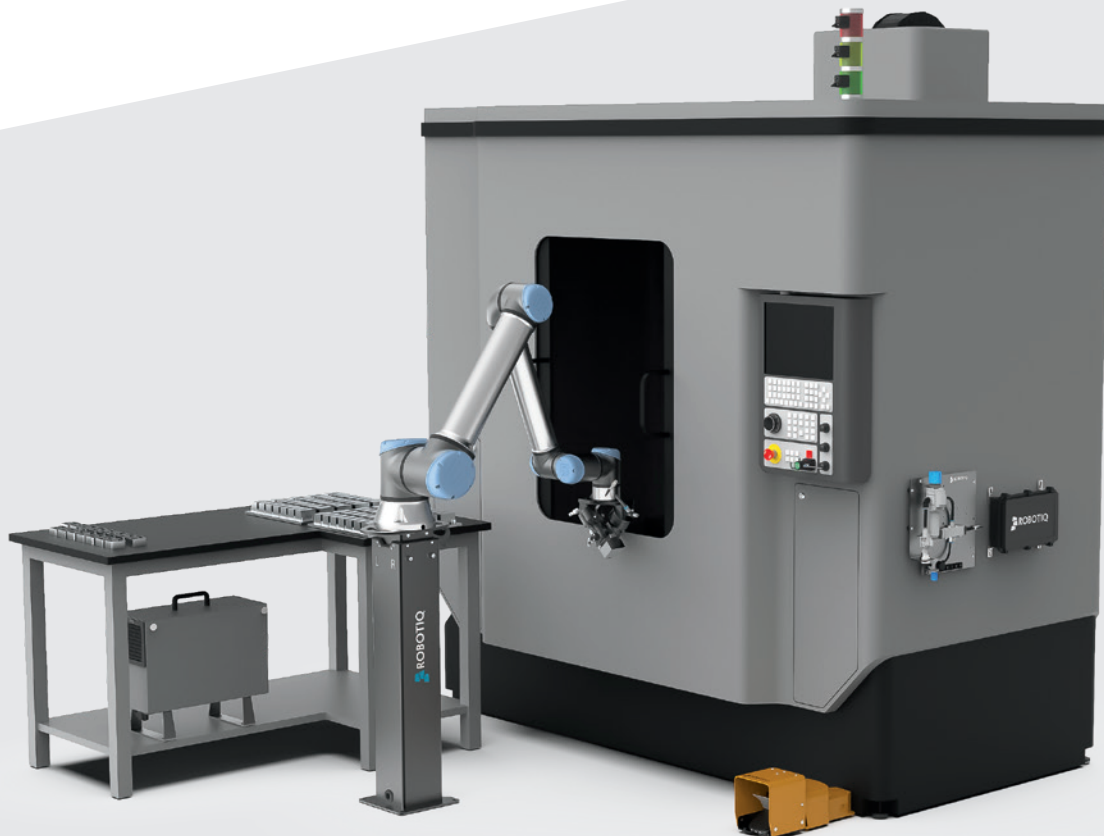
[www.electromate.com](http://www.electromate.com)

[sales@electromate.com](mailto:sales@electromate.com)



# MACHINE TENDING *SOLUTION*

Automation should simplify your life. Not make it more complicated.



**START  
PRODUCTION  
FASTER**

## Keep chips flying

Getting robots up and running is complex and can leave you feeling overwhelmed. With the Machine Tending Solution, we deliver peace of mind that your machines will always keep running through accessible automation.



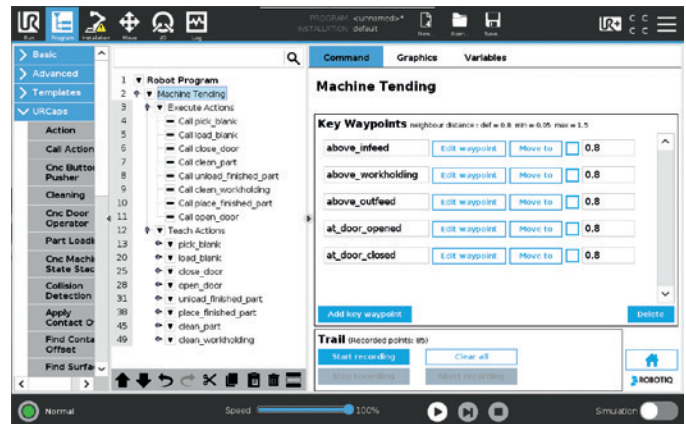
**Increase your machine's capacity  
and reduce downtime**  
with an easy to use Robotiq solution  
that does the work for you.

Create programs 75% faster than with traditional programming, thanks to guidance on setting key waypoints and simple action menus.



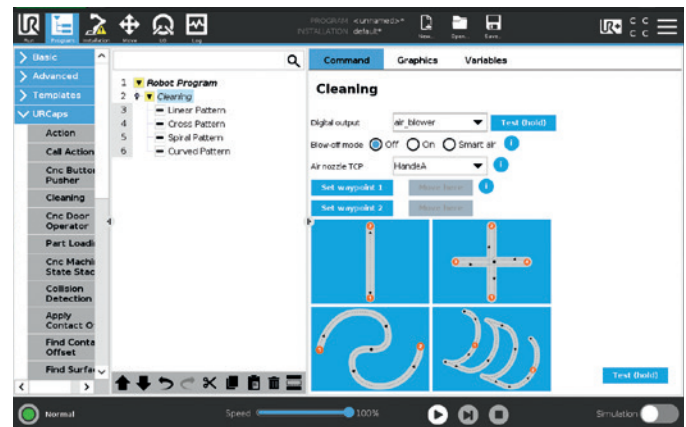
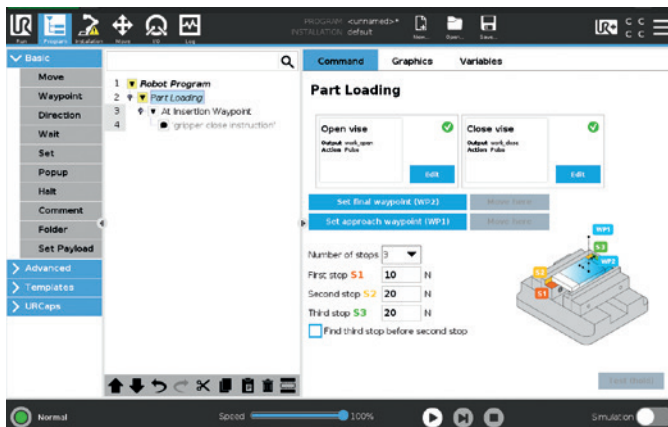
## 1 SET KEY WAYPOINTS

Once they're set, they become reference points for your operations.



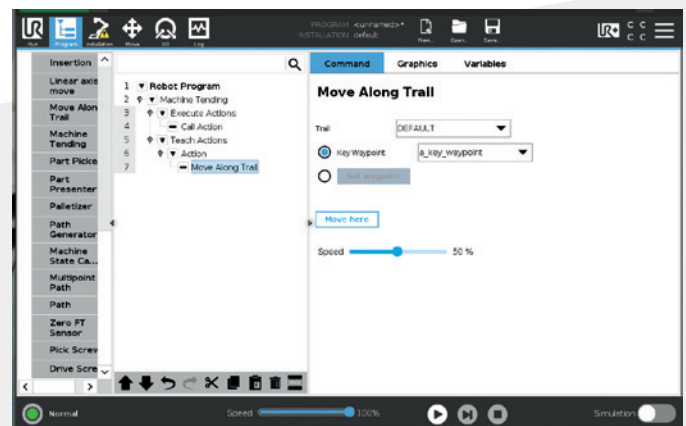
## 2 REFINE OPERATIONS

Use our action menus and adapt the solution to your needs.



## 3 CREATE YOUR SMART MOVES

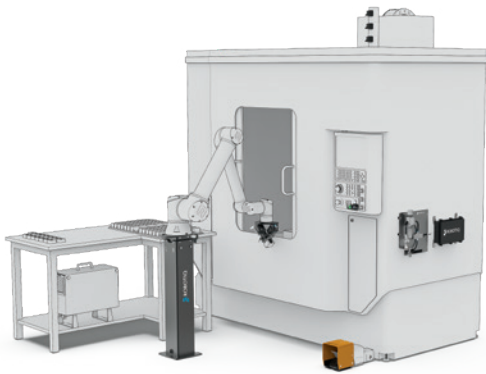
Machine Tending Copilot creates optimized movements between your key waypoints, finding the best path through the pre-defined flyzone and automatically avoiding collisions within the workcell.



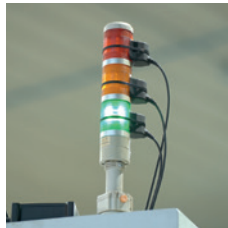
## IT COULDN'T BE EASIER!

Instead of hard-wiring the machine like with traditional automation, our communication modules are non-invasive and do not require installation by certified technicians

The solution can be deployed in 2–3 hours.



Press buttons on the HMI



Monitor machine status



Control workholding

	Single gripper	Double gripper
<b>System core</b>	Machine Tending Copilot software Robotiq MT controller Pneumatic panel Button Activator Air nozzle kit	
<b>Gripper</b>	Hand-E adaptive gripper MT fingertips starting kit	2x Hand-E adaptive grippers 2x MT fingertips starting kit Dual bracket + New compact dual Hand-E bracket
<b>Machine interface</b>	Stacklight detector Footswitch activator (if lathe)	
<b>Add-ons</b>	Robotiq Wrist Camera Robotiq adjustable pedestal	

### Robotiq Wrist Camera (Optional)



Ideal for faster blank programming and picking parts in an unstructured environment.

- CAD file import teaching (.dxf)
- Automatic part teaching (user defined arbitrary shape)
- Parametric part teaching (circle, ring, square, rectangle)
- Edge editing, object color and clearance validation
- Automatic and manual camera parameters: exposure, focus, LED lighting, white balance

Sold & Serviced By:



Toll Free Phone (877) SERV098

[www.electromate.com](http://www.electromate.com)

[sales@electromate.com](mailto:sales@electromate.com)