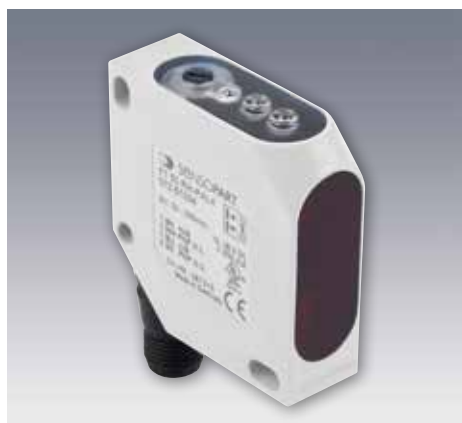


# FT 50 RH

Photoelectric diffuse sensor with background suppression

Sold & Serviced By:  
 **ELECTROMATE**

Toll Free Phone (877) SERV098  
[www.electromate.com](http://www.electromate.com)  
[sales@electromate.com](mailto:sales@electromate.com)



## PRODUCT HIGHLIGHTS

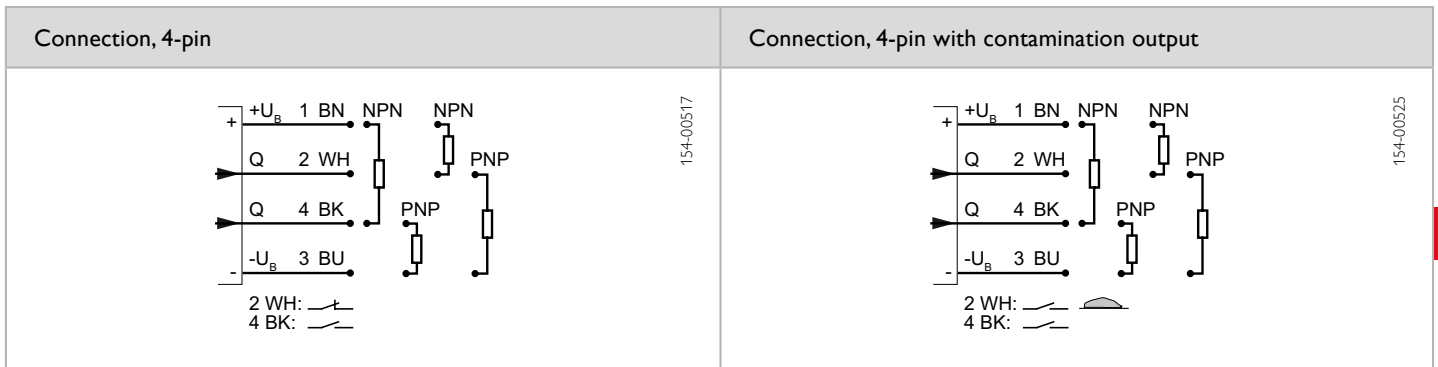
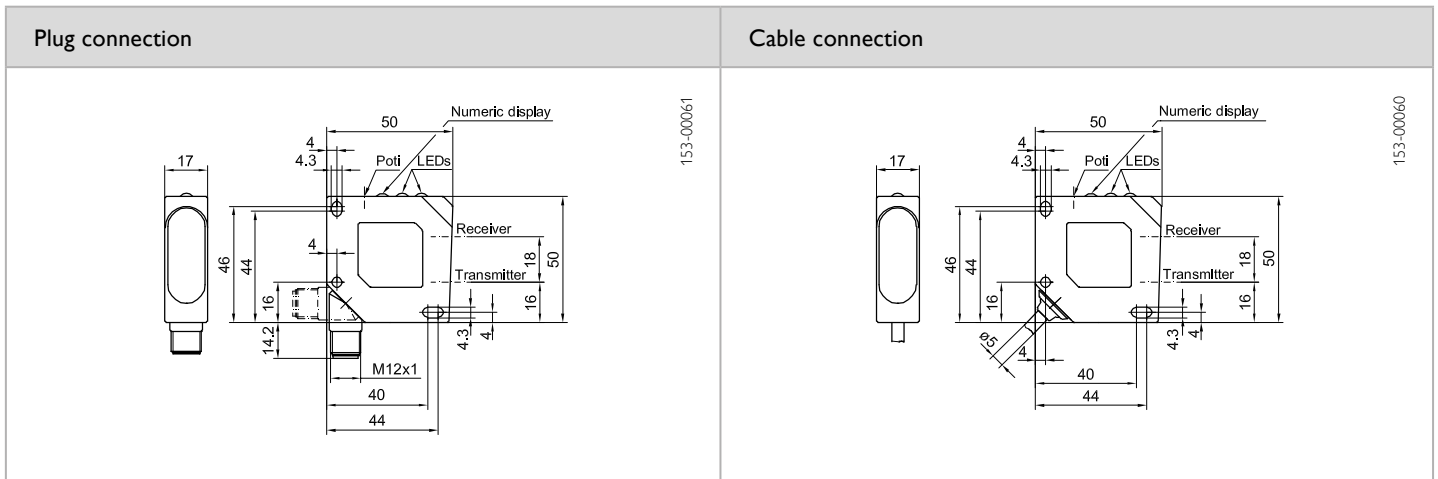
- Precisely adjustable background suppression
- Simple scanning distance adjustment thanks to indicator scale
- Optional contamination output
- Plug connector rotatable

Optical data		Functions	
Scanning distance	30 ... 300 mm <sup>1</sup>	Indicator LED, green	Operating voltage indicator
Type of light	LED, red, 660 nm	Indicator LED, yellow	Switching output indicator
Light spot size <sup>2</sup>	8 x 8 mm <sup>2</sup>	Indicator LED, red	Contamination indicator
		Scanning distance adjustment	Via potentiometer
Electrical data		Mechanical data	
Operating voltage, +U <sub>B</sub>	10 ... 30V DC <sup>3</sup>	Dimensions	50 x 50 x 17 mm
No-load current, I <sub>0</sub>	≤ 35 mA <sup>4</sup>	Enclosure rating	IP 67 <sup>6</sup>
Output current, I <sub>e</sub>	≤ 200 mA	Material, housing	ABS
Protective circuits	Reverse-polarity protection, U <sub>B</sub> / short-circuit protection (Q)	Material, front screen	PMMA
Protection Class	2	Type of connection	See selection table
Power On Delay	≤ 300 ms	Ambient temperature: operation	-20 ... +60 °C
Switching output, Q	PNP/NPN, antivalent (see selection table)	Ambient temperature: storage	-20 ... +80 °C
Output function	N.O./N.C. (see selection table)	Weight (plug device)	40 g
Switching frequency, f (ti/tp 1:1)	≤ 1000 Hz	Weight (cable device)	130 g
Response time	500 μs	Vibration and impact resistance	EN 60947-5-2
Connection, BK	N.O.		
Connection, WH <sup>5</sup>	N.C.		
Contamination output, WH (optional)	N.O. (see selection table)		

<sup>1</sup> Reference material: grey, 18 % reflectivity    <sup>2</sup> At scanning distance of 200 mm    <sup>3</sup> Max. 10 % ripple, within U<sub>B</sub>    <sup>4</sup> At 24V DC    <sup>5</sup> Without contamination output

<sup>6</sup> With connected IP 67 plug

Scanning distance	Switching output	Type of connection	Contamination output	Part number	Article number
30 ... 300 mm	PNP, antivalent	Plug, M12x1, 4-pin	No	FT 50 RH-PAL4	572-51004
30 ... 300 mm	NPN, antivalent	Plug, M12x1, 4-pin	No	FT 50 RH-NAL4	572-51005
30 ... 300 mm	PNP (N.O.)	Plug, M12x1, 4-pin	Yes	FT 50 RH-PSVL4	572-51006
30 ... 300 mm	NPN (N.O.)	Plug, M12x1, 4-pin	Yes	FT 50 RH-NSVL4	572-51007
30 ... 300 mm	PNP, antivalent	Cable, 3 m, 4-wire	No	FT 50 RH-PAK4	572-51000
30 ... 300 mm	NPN, antivalent	Cable, 3 m, 4-wire	No	FT 50 RH-NAK4	572-51001
30 ... 300 mm	PNP (N.O.)	Cable, 3 m, 4-wire	Yes	FT 50 RH-PSVK4	572-51002
30 ... 300 mm	NPN (N.O.)	Cable, 3 m, 4-wire	Yes	FT 50 RH-NSVK4	572-51003



Accessories	
Connection cables	From Page A-38
Brackets	From Page A-4

Sold & Serviced By:



Toll Free Phone (877) SERV098

[www.electromate.com](http://www.electromate.com)

[sales@electromate.com](mailto:sales@electromate.com)