

# IS 530

Inductive sensor with expanded switching distance

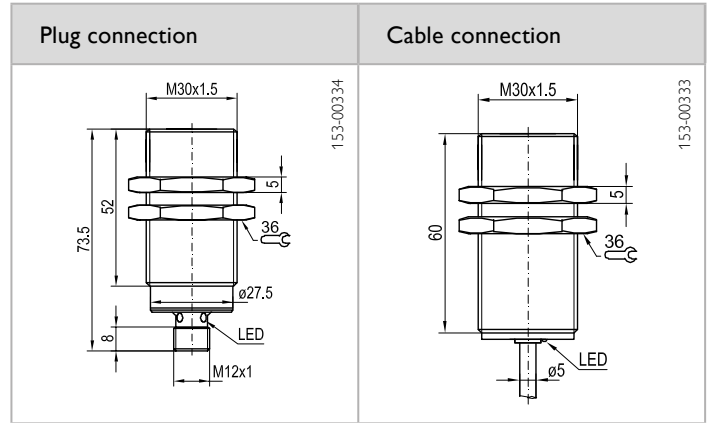
Sold & Serviced By:



Toll Free Phone (877) SERV098

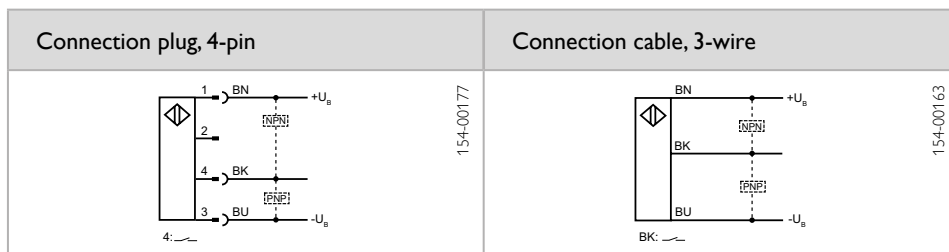
www.electromate.com

sales@electromate.com



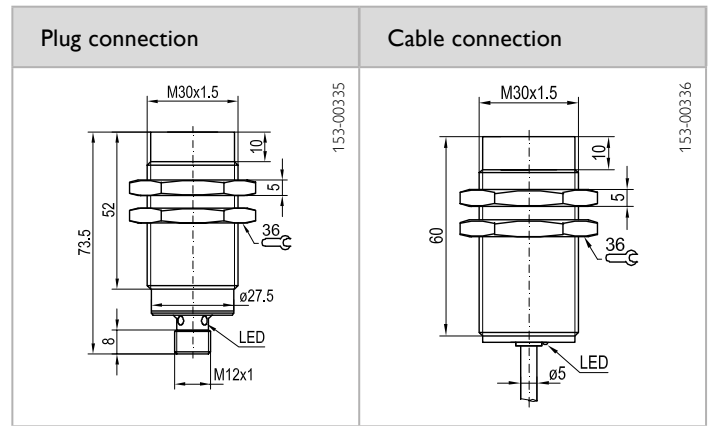
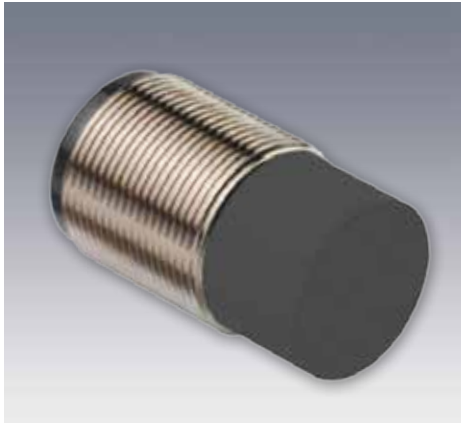
Sensor data		Functions	
Switching distance	22 mm	Indicator LED, yellow	Operating voltage indicator
Repeatability	1.1 mm <sup>1</sup>		
Hysteresis	≤ 10 % <sup>2</sup>		
Reduction factor; Al	0.40		
Reduction factor; Cu	0.35		
Reduction factor; V2A	0.66		
Reduction factor; steel FE 360	1.00		
Reduction factor; brass	0.35		
Electrical data		Mechanical data	
Operating voltage, +U <sub>B</sub>	10 ... 30V DC <sup>3</sup>	Dimensions	See Selection Table
No-load current, I <sub>0</sub>	≤ 10 mA	Mounting	Quasi-flush
Output current, I <sub>e</sub>	≤ 200 mA	Enclosure rating	IP 67 <sup>4</sup>
Voltage drop, U <sub>D</sub>	≤ 2V at 200 mA	Material, housing	Brass, chrome-plated
Protective circuits	Reverse-polarity protection, U <sub>B</sub> / short-circuit protection (Q) / induction protection	Material, front surface	PBTP
Switching output, Q	PNP / NPN (see Selection Table)	Type of connection	See Selection Table
Output function	N.O.	Ambient temperature: operation	-25 ... +70 °C
Switching frequency, f (ti/tp 1:1)	≤ 200 Hz	Vibration and impact resistance	IEC 60947-5-2 / 7.4

<sup>1</sup> U<sub>B</sub> = 20 ... 30V DC, T<sub>A</sub> = 23 °C ± 5 °C    <sup>2</sup> Refers to switching distance    <sup>3</sup> Max. 20 % ripple, within U<sub>B</sub>    <sup>4</sup> With connected IP 67 plug



Switching distance	Switching output	Dimensions	Type of connection	Part number	Article number
22 mm	PNP	M30 × 73.5 mm	Plug, M12x1, 4-pin	IS 530-42	996-09905
22 mm	NPN	M30 × 73.5 mm	Plug, M12x1, 4-pin	IS 530-41	996-50673
22 mm	PNP	M30 × 60 mm	Cable, 2 m, 3-wire	IS 530-02	996-09437
22 mm	NPN	M30 × 60 mm	Cable, 2 m, 3-wire	IS 530-01	996-09436

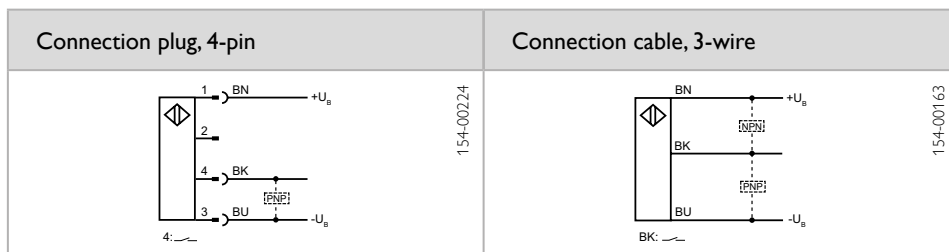
## Inductive sensor with expanded switching distance



Sensor data		Functions	
Switching distance	40 mm	Indicator LED, yellow	Operating voltage indicator
Repeatability	2 mm <sup>1</sup>		
Hysteresis	≤ 10 % <sup>2</sup>		
Reduction factor; Al	0.42		
Reduction factor; Cu	0.37		
Reduction factor; V2A	0.78		
Reduction factor; steel FE 360	1.00		
Reduction factor; brass	0.47		
Electrical data		Mechanical data	
Operating voltage, +U <sub>B</sub>	10 ... 30V DC <sup>3</sup>	Dimensions	See Selection Table
No-load current, I <sub>0</sub>	≤ 10 mA	Mounting	Non-flush
Output current, I <sub>e</sub>	≤ 200 mA	Enclosure rating	IP 67 <sup>4</sup>
Voltage drop, U <sub>D</sub>	≤ 2V at 200 mA	Material, housing	Brass, chrome-plated
Protective circuits	Reverse-polarity protection, U <sub>B</sub> / short-circuit protection (Q) / induction protection	Material, front surface	PBTP
Switching output, Q	PNP / NPN (see Selection Table)	Type of connection	See Selection Table
Output function	N.O.	Ambient temperature: operation	-25 ... +70 °C
Switching frequency, f (ti/tp 1:1)	≤ 100 Hz	Vibration and impact resistance	IEC 60947-5-2 / 7.4

12

<sup>1</sup> U<sub>B</sub> = 20 ... 30V DC; T<sub>A</sub> = 23 °C ± 5 °C    <sup>2</sup> Refers to switching distance    <sup>3</sup> Max. 20 % ripple, within U<sub>B</sub>    <sup>4</sup> With connected IP 67 plug



Switching distance	Switching output	Dimensions	Type of connection	Part number	Article number
40 mm	PNP	M30 x 73.5 mm	Plug, M12x1, 4-pin	IS 530-44-S	996-51454
40 mm	PNP	M30 x 60 mm	Cable, 2 m, 3-wire	IS 530-04-S	996-51452
40 mm	NPN	M30 x 60 mm	Cable, 2 m, 3-wire	IS 530-03	996-09438