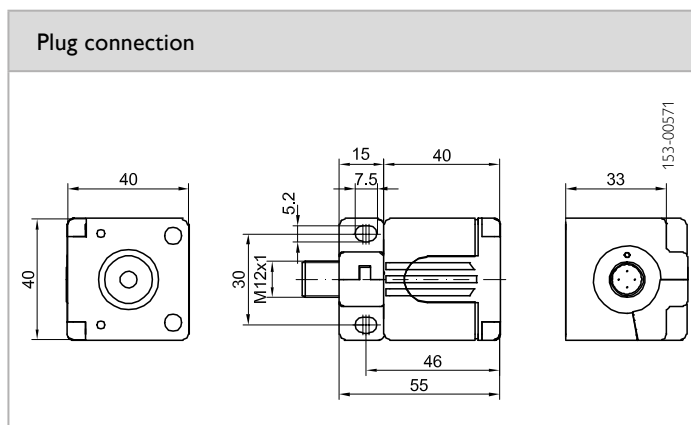
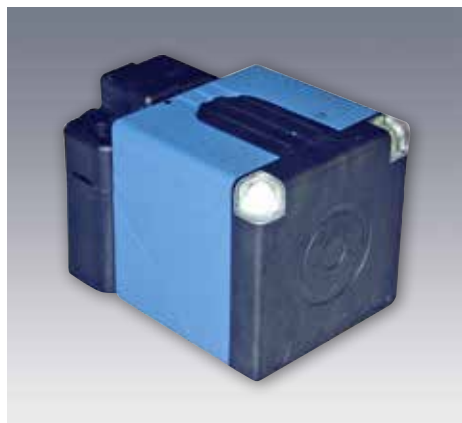


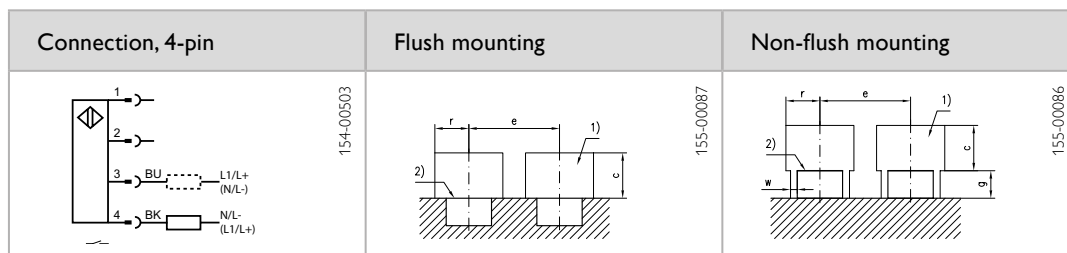
IT 40

Inductive sensor in cubic housing, AC/DC



Sensor data		Functions	
Switching distance	15 mm / 20 mm / 35 mm (see Selection Table)	Indicator LED, green	Operating voltage indicator
Reduction factors	See Selection Table	Indicator LED, yellow	Switching output indicator
		Default setting	Max. switching distance
Electrical data		Mechanical data	
Operating voltage, +U _B	20 ... 320V DC / 20 ... 265V AC	Dimensions	40 x 55 x 40 mm
No-load current, I ₀	1.5 mA ¹	Mounting	Flush / non-flush (see Selection Table)
Output current, I _e	≤ 300 mA	Enclosure rating	IP 67 ²
Protective circuits	Induction protection	Material, housing	PBT
Power On Delay	100 ms	Type of connection	Plug, M12x1, 4-pin
Switching output, Q	AC / DC (see Selection Table)	Ambient temperature: operation	-25 ... +85 °C ³
Output function	N.O.	Ambient temperature: storage	-40 ... +85 °C
Switching frequency, f (ti/tp 1:1)	See Selection Table	Weight	130 g
		Vibration and impact resistance	EN 60947-5-2

¹ at 24V ² With connected IP 67 plug ³ Except IT 40 NB-ACSL4 (-25 ... +70 °C)



Switching distance	Mounting	Switching output	Switching frequency, f (ti/tp 1:1)	Reduction factors	Part number	Article number
15 mm	Flush ⁴	AC/DC	25 Hz (AC) / 50 Hz (DC)	Al: 0.20 / Cu: 0.10 / V2A: 0.85	IT 40 B-ACSL4	810-50004
20 mm	Flush ⁵	AC/DC	25 Hz (AC) / 30 Hz (DC)	Al: 0.20 / Cu: 0.30 / V2A: 0.70	IT 40 BD-ACSL4	810-50005
35 mm	Non-flush ⁶	AC/DC	25 Hz (AC) / 30 Hz (DC)	Al: 0.45 / Cu: 0.40 / V2A: 0.70	IT 40 NB-ACSL4	810-50008

⁴ e > 75 mm, r > 25 mm, c > 30 mm ⁵ e > 80 mm, r > 30 mm, c > 40 mm ⁶ e > 160 mm, r > 80 mm, g > 40 mm, w > 15 mm, c > 90 mm